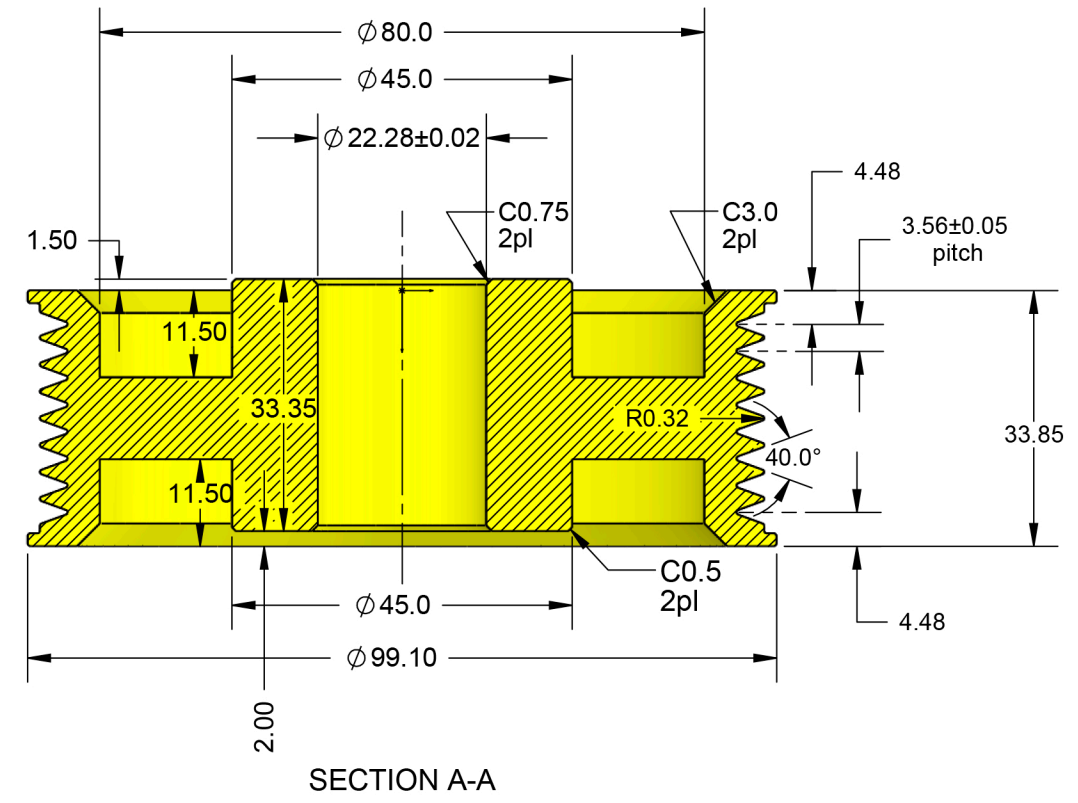
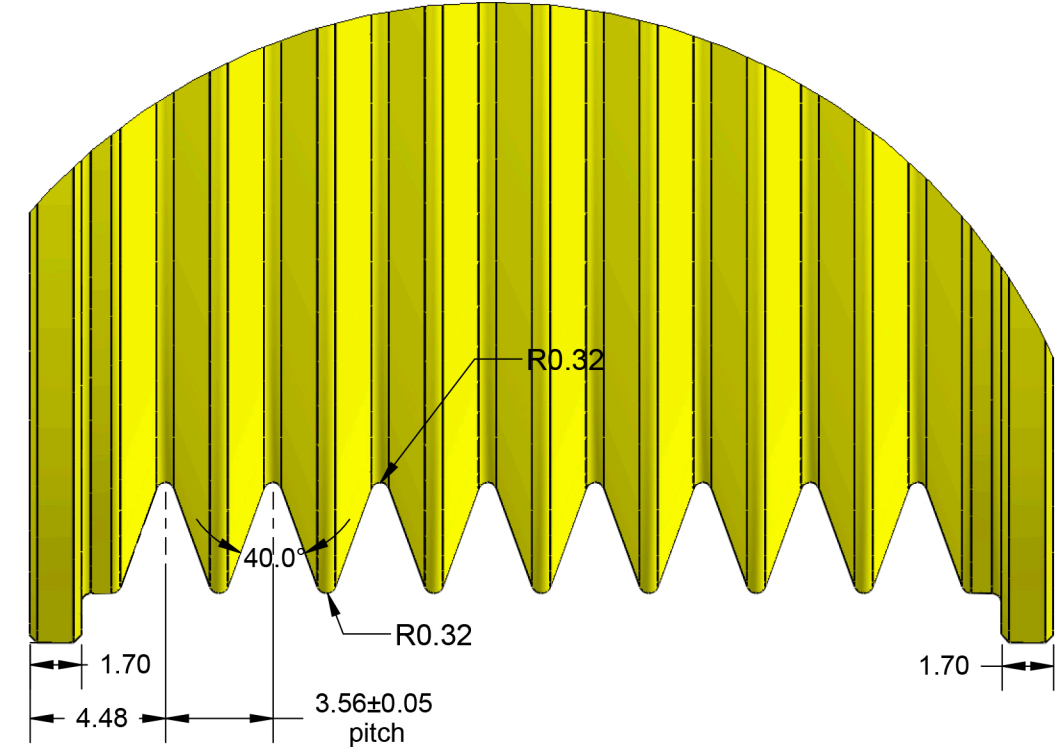
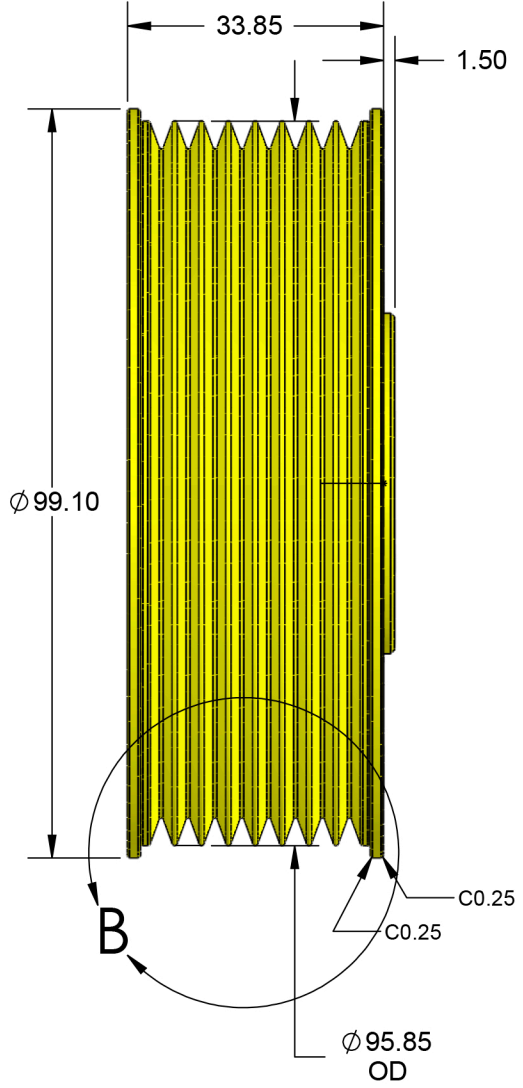
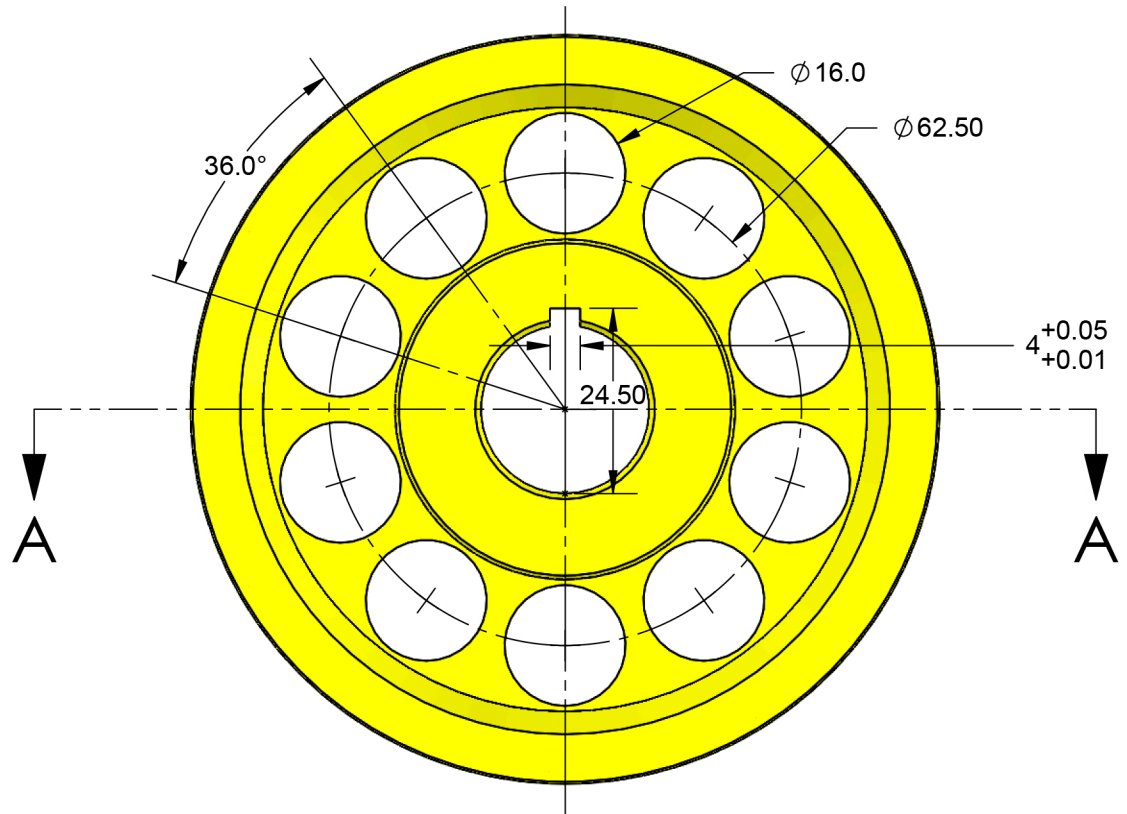


| NO. | REVISION | DATE | IN'L |
|-----|----------|------|------|
| | | | |



NOTES:
 -8 groove pulley, PK profile, OD 95.85 mm.
 -Material 1010 AISI steel, zinc plated with silver chromate finish.
 -Surface finish 1.6 micrometer.

UNLESS OTHERWISE SPECIFIED
 ALL DIM. ARE IN MM
 DO NOT SCALE.
 FLAT IS FOR REFERENCE ONLY.
 TOLERANCES: .XX $\pm .10$
 .X ± 0.2
 X ± 0.5
 HOLES:
 FRACT.
 ANGLES $\pm .5^\circ$
 THIS SYMBOL REPRESENTS
 A CONTROL DIMENSION.
 CONTROL DIMENSIONS ARE CONSIDERED
 TO BE A GOOD INDICATOR OF WHETHER
 A MANUFACTURING PROCESS IS IN
 CONTROL. THESE DIM. MUST HAVE A
 MIN Cpk OF 1.33 FOR A SAMPLE
 OF 31 CONSECUTIVE PIECES.

| | |
|------------|-------------------|
| MATERIAL | |
| FINISH | |
| WHERE USED | |
| DR BY | bi jan 12 2017 |
| CHK'D | bi jan 12 2017 |
| SCALE | DATE |

| | | | |
|---------------------------------|-----------|-------|------|
| TITLE | | REV | |
| Pulley - 8 groove OD 95.8 mm | | | |
| DWG NO. | 2400-2582 | SHEET | SIZE |
| 10F1 | B | | |



This drawing, and the design of the article represented herein, are the exclusive property of Dixie Electric Limited and are provided strictly on a confidential basis. The drawing and design shall be used only for the purposes for which they have been provided and shall not be produced, reproduced, altered, used, published or disclosed to others without the prior written consent of Dixie Electric Limited.